

WARNING

1. Please use all accessories as intended to avoid damage to your device.
2. When not using your device for a long period of time, please take out the batteries from the device.
3. Should damage occur, please do not attempt to repair by yourself. Use any available warranty, in the first instance contact the reseller you purchased the unit from.
4. Please keep this product and accessories away from children and pets.
5. To clean the device, use only a slightly damp towel, and do not allow moisture to get inside of the device.
6. Over-temperature Protection: if the board temperature goes over 75°C/167°F, the device will cut power, when you press Fire Button, the screen will display "TOO HOT".
7. Low-voltage Protection: if battery level is lower than 6.4v, when you press the Fire Button, the screen will display "LOW BATTERY".

Further advice:

For more information on using the device, please go to www.youtube.com/c/VapingBiker

Batteries:

Always use high drain batteries bought from trusted sources. Ensure your batteries are in good condition, matching, and have similar life-cycles.

For more information on cells and battery tests, please go to Battery Mooch www.e-cigarette-forum.com/blogs/mooch.256958/

www.dovpoecig.com



DOVPO®

BASIUM

DUAL 18650 180W SQUONK MOD

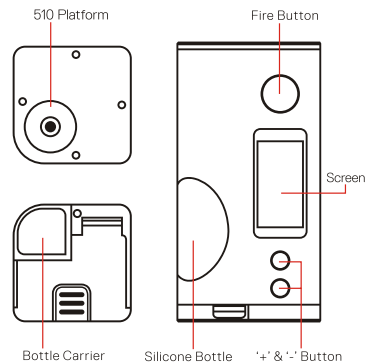


A VAPING BIKER PROJECT

A

SPECIFICATIONS

1. Size: 80.0mm x 41.0mm x 41.0mm
2. Material: Zinc Alloy
3. Input Voltage Range: 6.4v – 8.4v
4. Resistance Range: 0.08 Ω – 3.50 Ω
5. Working Mode: Variable Wattage & Variable Voltage
6. Wattage Range: 5.0W – 180.0W
7. Voltage Range: 1.0v – 8.0v
8. Display: 0.96" OLED
9. SS Spring Loaded 510
10. Silicon bottles with a capacity of 6ml



START VAPING

1. Install 2 x 18650 high-drain battery. Make sure the positive and negative ends are facing the correct directions.
2. Power On/Off: Click Fire Button 5 times quickly to turn the device on, repeat the process to turn the device off.
3. Install the squonk bottle to the bottle carrier, slide the bottle carrier into the device until it clicks into place.
4. Attach an atomizer to the device, set your desired wattage/voltage and start vaping by pressing the Fire Button.
5. To switch from Wattage Mode to Voltage Mode and vice versa, hold both Fire Button and "+" Button.
6. Hold both "+" and "-" to LOCK the 'UP' and 'DOWN' buttons.

SAFETY FEATURES & WARNINGS

1. Battery Reversal Protection
2. Short-circuit Protection: if there is a short circuit, when you press the Fire Button, the screen will display "SHORTED".
3. If the resistance of the atomizer is lower than 0.08 Ω, when you press the Fire Button, the screen will display "LOW Ω".
4. Open-circuit Warning: if there is no atomizer attached or atomizer has an open circuit, when you press the Fire Button, the screen will display "CHECK ATOMIZER".
5. Overtime Protection: the device will cut power after 10 seconds of continuous firing, screen will display "OVER 10S".
6. Over-temperature Protection: if the board temperature goes over 75°C/167°F, the device will cut power, when you press Fire Button, the screen will display "TOO HOT".
7. Low-voltage Protection: if battery level is lower than 6.4v, when you press the Fire Button, the screen will display "LOW BATTERY".

B

说明书

尺寸：108x85mm，对折2页，对折后尺寸是54x85mm

材质：157g双铜纸，过哑膜